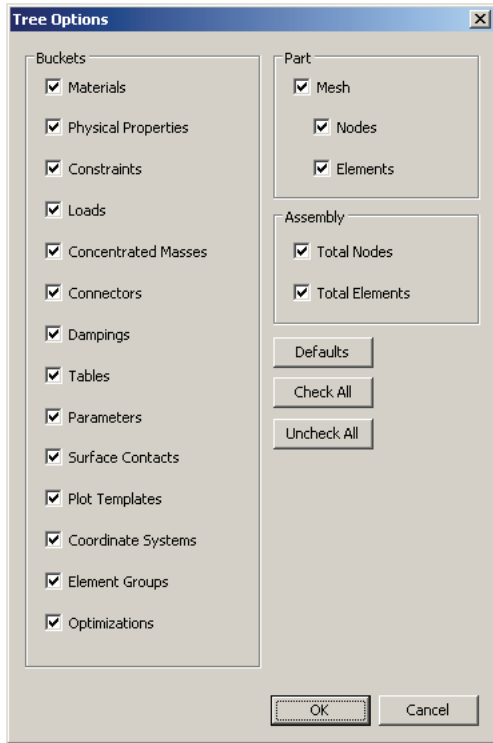


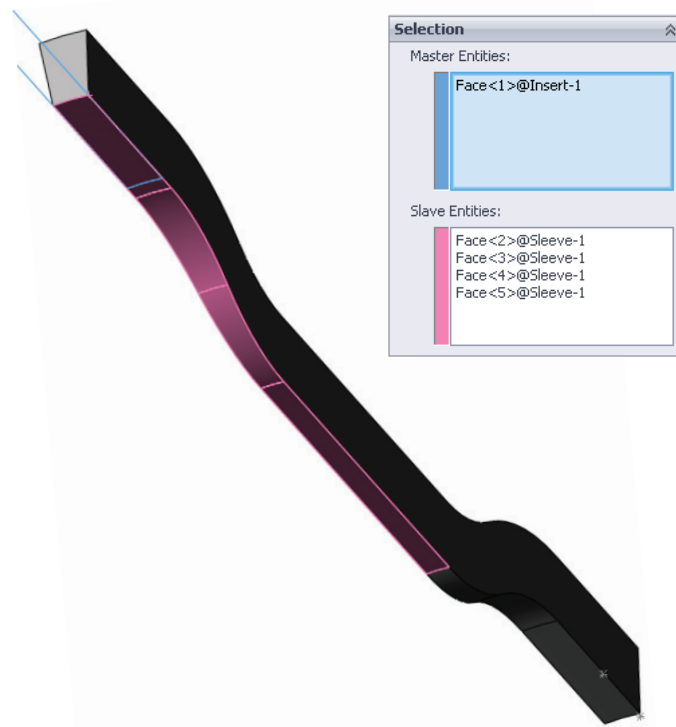
8. Tree Simplification Enhancement

- Items can be removed from the analysis tree that may not be used, or to simplify the tree view for maneuverability



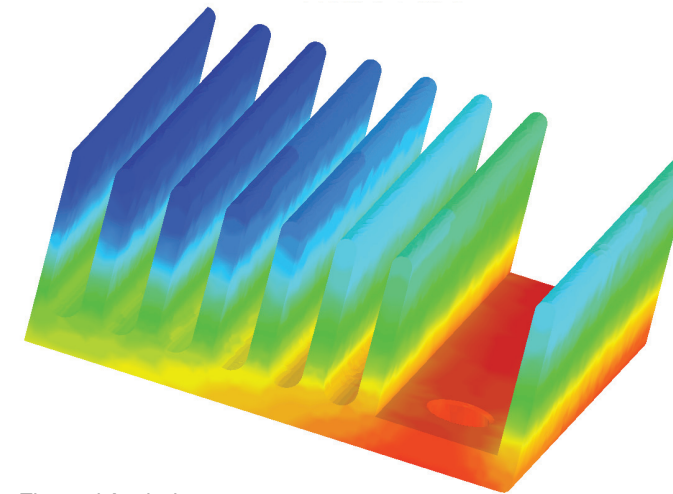
9. Multi-Surface Contact Surface Selection

- Multiple surfaces can now be selected for easy surface contact definition across multiple surfaces

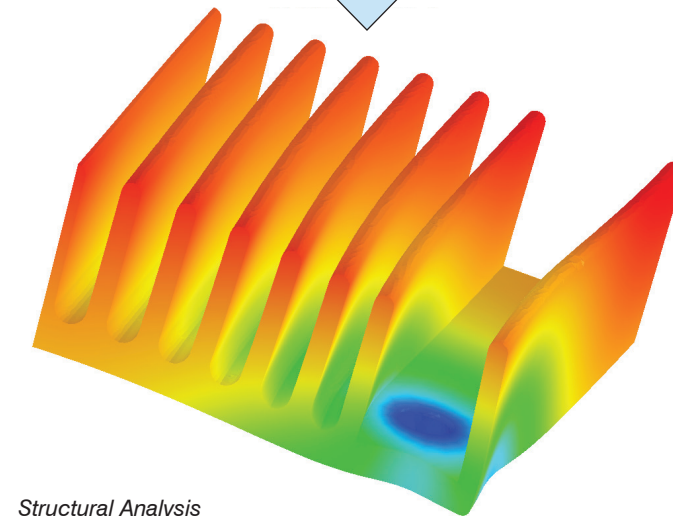


1. Thermal Stress

- Nodal temperatures can be found in a thermal analysis and used in a structural analysis to determine stress and deflection



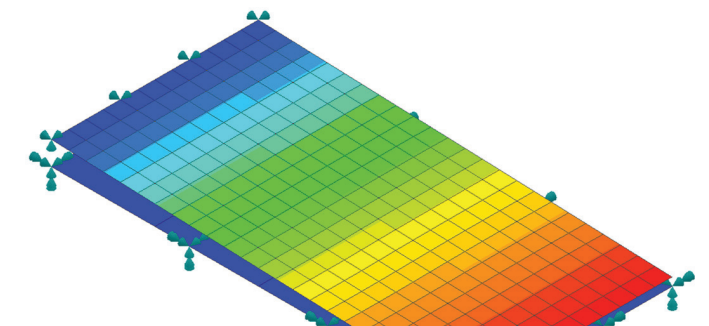
Thermal Analysis



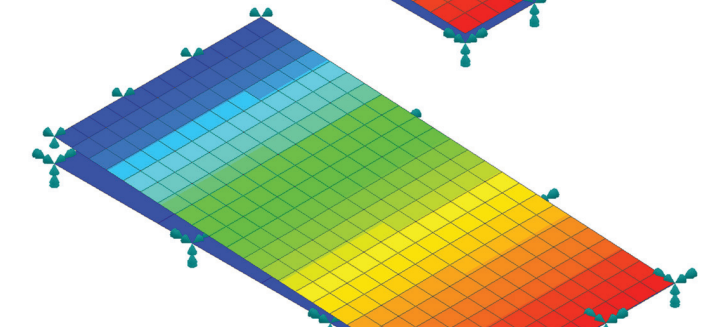
Structural Analysis

2. Nonlinear Transient Response

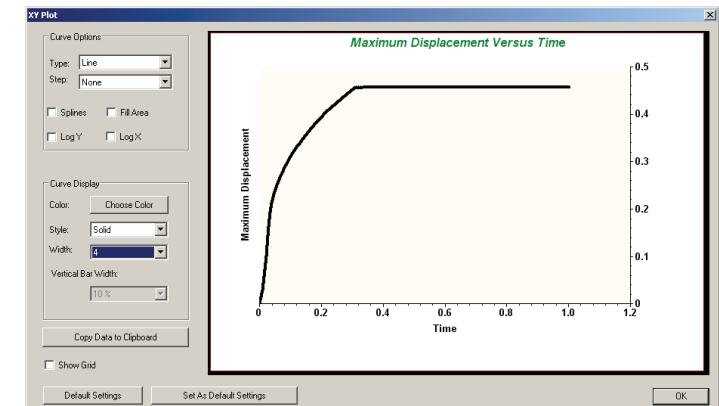
- Nonlinearities (contact, material, large displacement) can all be captured in the time domain
- Enhanced user control of nonlinear parameters



T=0.095 sec



T=0.45 sec



NEi Software
5555 Garden Grove Blvd., Ste 300
Westminster, CA 92683-1886
United States

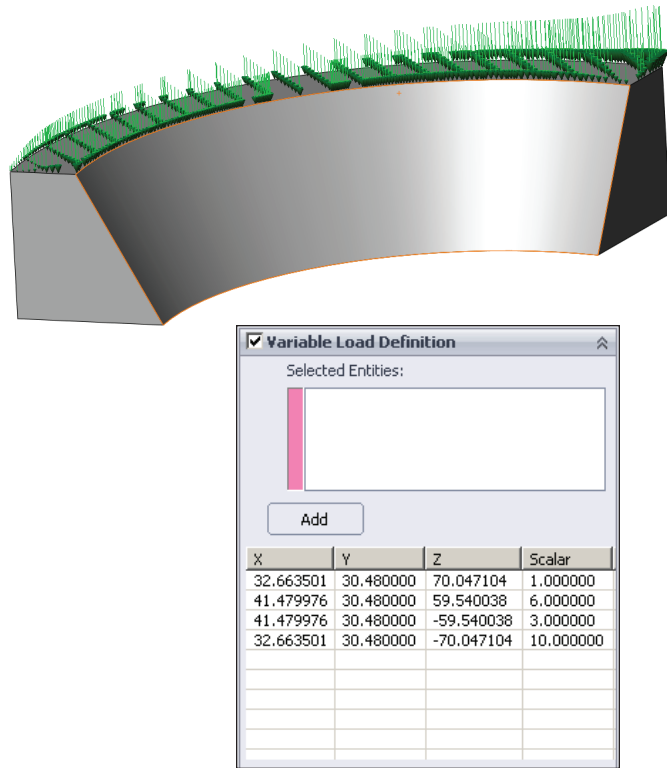
Phone: +1 (714) 899-1220
Fax: +1 (714) 899-1369
E-mail: info@neissoftware.com
Website: www.NEiSoftware.com



NEi, NEi Works, NEi Fusion, and the NEi logo are trademarks of NEi Software, Inc. NASTRAN is a registered trademark of NASA. All other trademarks are the property of their respective owners. Copyright © NEi Software, Inc. 2010. All rights reserved.

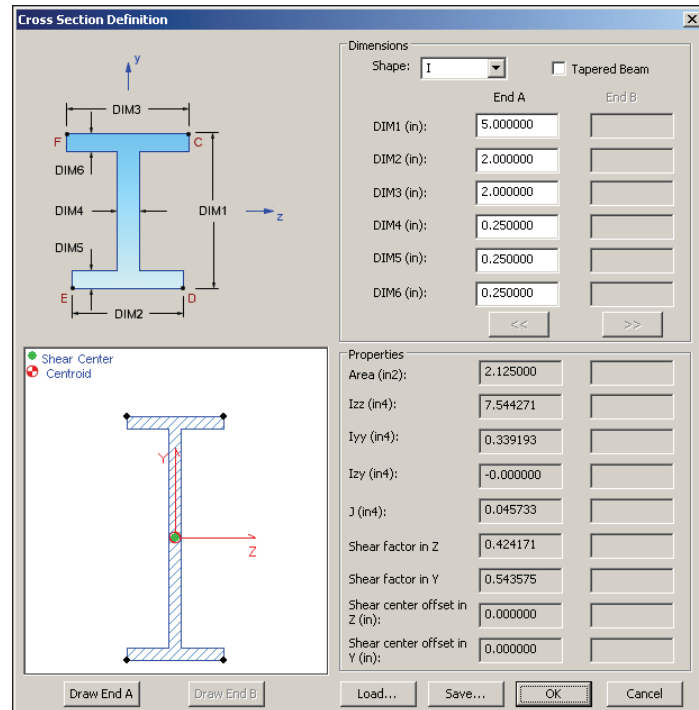
3. Variable Loading

- Loads can now be varied using a surface definition detailing how the surface is scaled in space



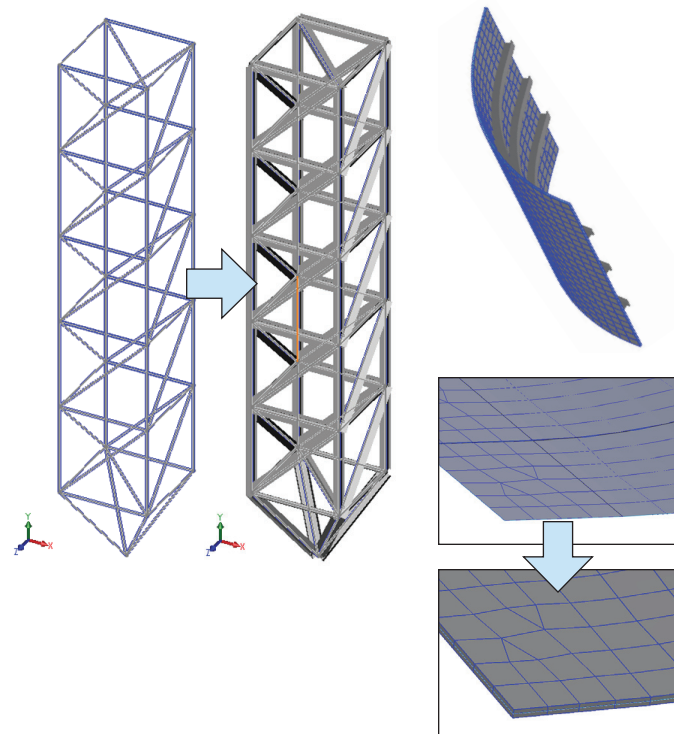
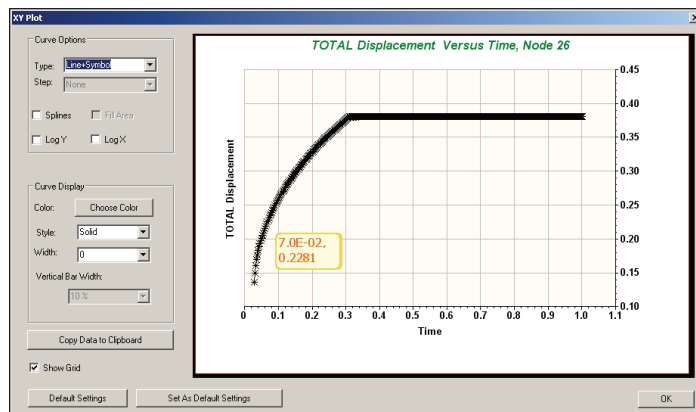
5. Beam / Bar Enhancements

- Beam element cross-section visualization
- Interactive cross-section definition
- Combined shell and beam meshing
- Cross-section display for shell elements



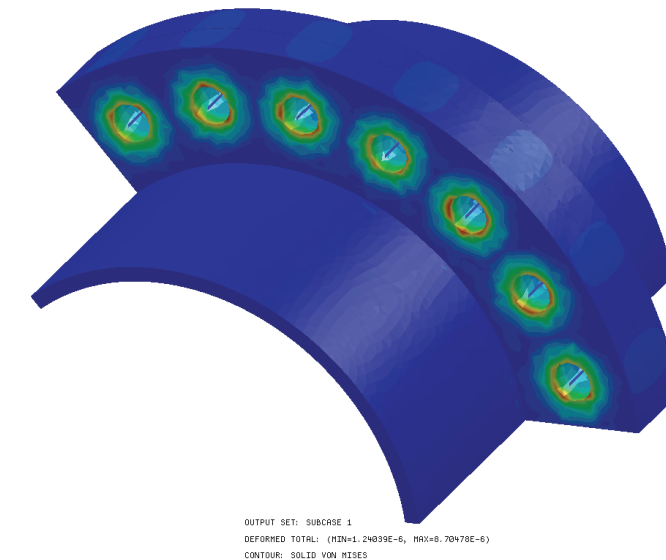
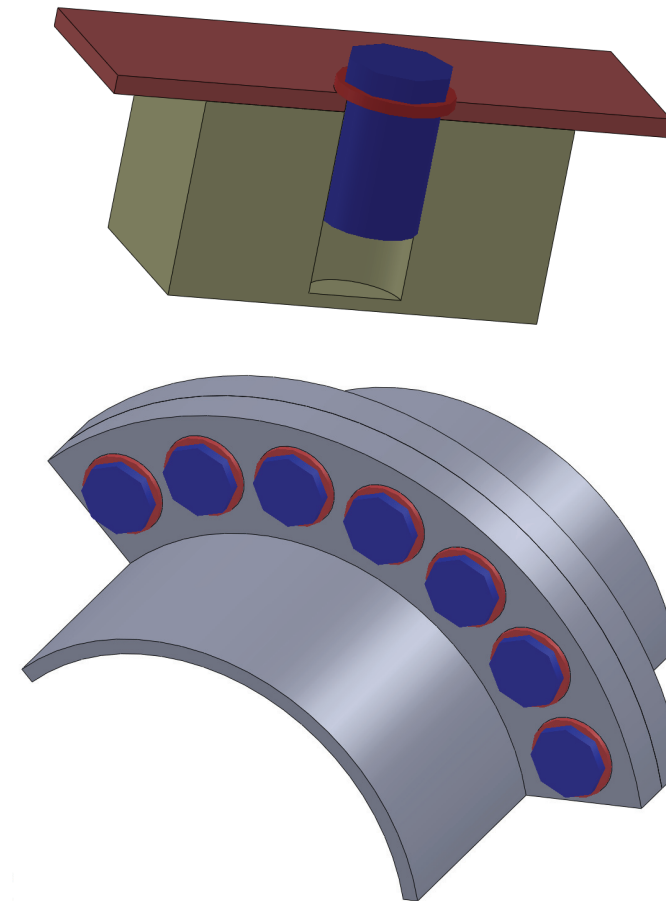
4. XY Plot Enhancements

- Logarithmic axis options (x and y)
- Hover over data point display



6. Automated Bolted Joints

- Bolts and cap screw joints can be automatically created by selecting appropriate geometry
- Washers, custom materials, and preload can all be added



7. Failure Theories

- Factor of safety contour plots based upon **Von Mises** and **Maximum Principal** stress theories can be created

